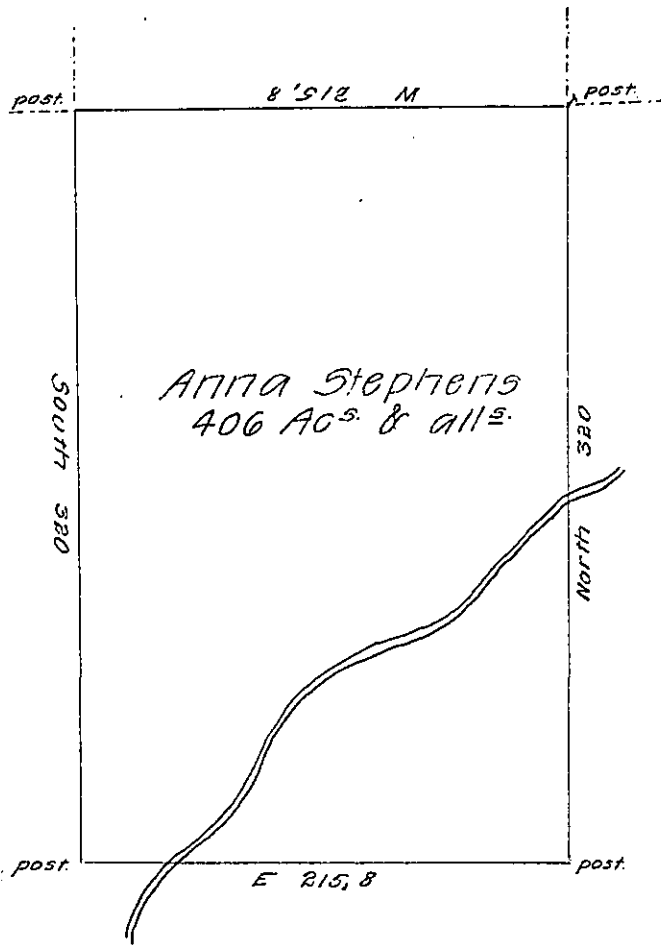


Paul Grouf

Elisha Downer



Jona Stephens

By virtue of a warrant dated 3<sup>d</sup> of September 1792 Surveyed  
 the tenth day of November 1792 unto Anna Stephens the above  
 described tract of four hundred and six acres of land situat-  
 ed on a branch of Mahoprey Creek in the County of Northum-  
 berland.

By W<sup>m</sup> Montgomery D.S.

To Daniel Brodhead Esqr.

Surv<sup>r</sup> Gen<sup>l</sup> of Pennsylv<sup>a</sup>

IN TESTIMONY that the above is a copy of the original remaining on file in  
 the Department of Internal Affairs of Pennsylvania, made  
 conformably to an Act of Assembly approved the 16th day of  
 February, 1833, I have hereunto set my Hand and caused  
 the Seal of said Department to be affixed at Harrisburg,  
 this seventh day of March 1907.

*James B. Brown*  
 Secretary of Internal Affairs.